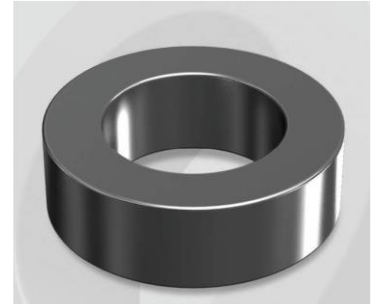


HP1625026G

Electrical Characteristics

Material	Permeability (μ)	AL \pm 8% (nH/N ²)	DCB (% min) @ 200 Oe	Coreloss (mW/cm ³ , max) @ 50kHz, 100G
HP	26	80	58.0	3

OD : 1625



Core Dimensions

Dimensions		Uncoated		Coated		Color	Packaging
		(mm)	(inch)	(mm)	(inch)		
OD	(Max)	165.00	6.496	167.20	6.583	Black	Box Qty = 4 pcs
ID	(min)	88.90	3.500	86.90	3.421		
HT	(max)	25.40	1.000	27.30	1.075		

Physical Characteristics

Cross Section (A)	Path Length (l)	Window Area (Wa)	Volume (V)	Breakdown Voltage (Vac)
9.460 cm ²	38.65 cm	59.31 cm ²	365.629 cm ³	1,000
1.466 in ²	15.22 in	11,705,189 cmil	22.3107 in ³	

Winding Information

0% Winding length/turn (cm)		
13.490		
40% winding factor Surface Area (cm ²)		
916.95		
40% Wound Di.(mm)		
OD	ID	HT
188.62	56.89	53.02

Typical DC Bias Performance

